

ROHBI TECH



RKA 92.600 SL and GT

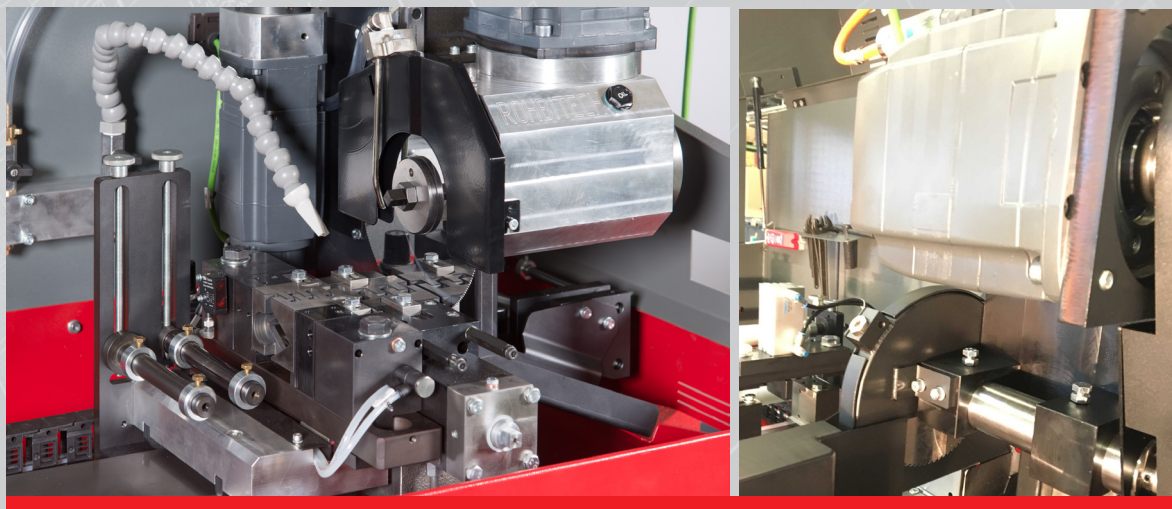
This precision circular saw is designed to cut solid metal, profiles and tubes. Thanks to the precise multi-axis clamp jaws, rods with complex shapes can easily be cut. To cut tubes we often use prismatic jaws and process the tubes in bundles. This way we can achieve high productivity, cuts with little burr and piece lengths with a reliable tolerance of $\pm 0.02\text{mm}$.



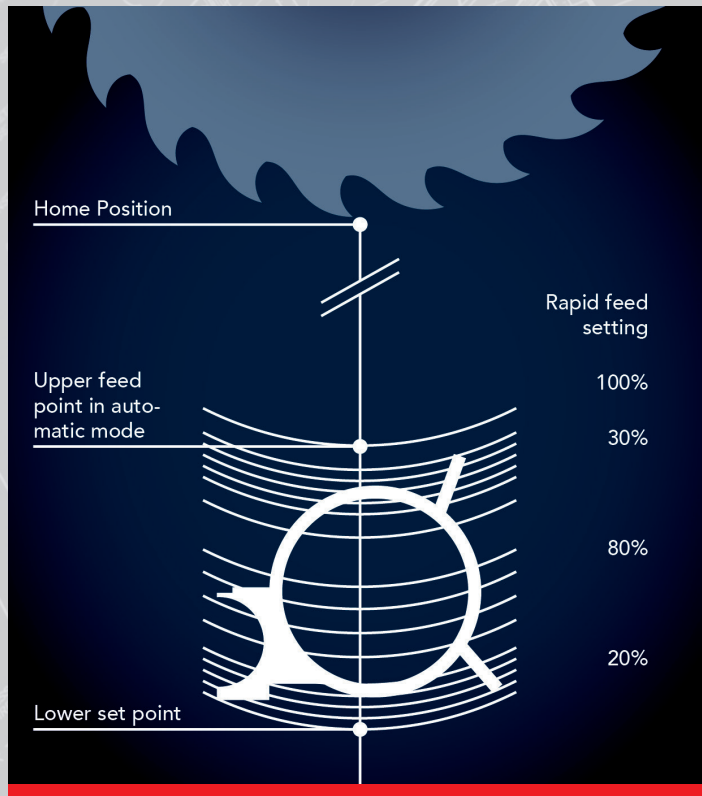
The circular saw is controlled via a Siemens SPS S7-1512SP F. The mobile control module allows remote programming and operation of the saw.



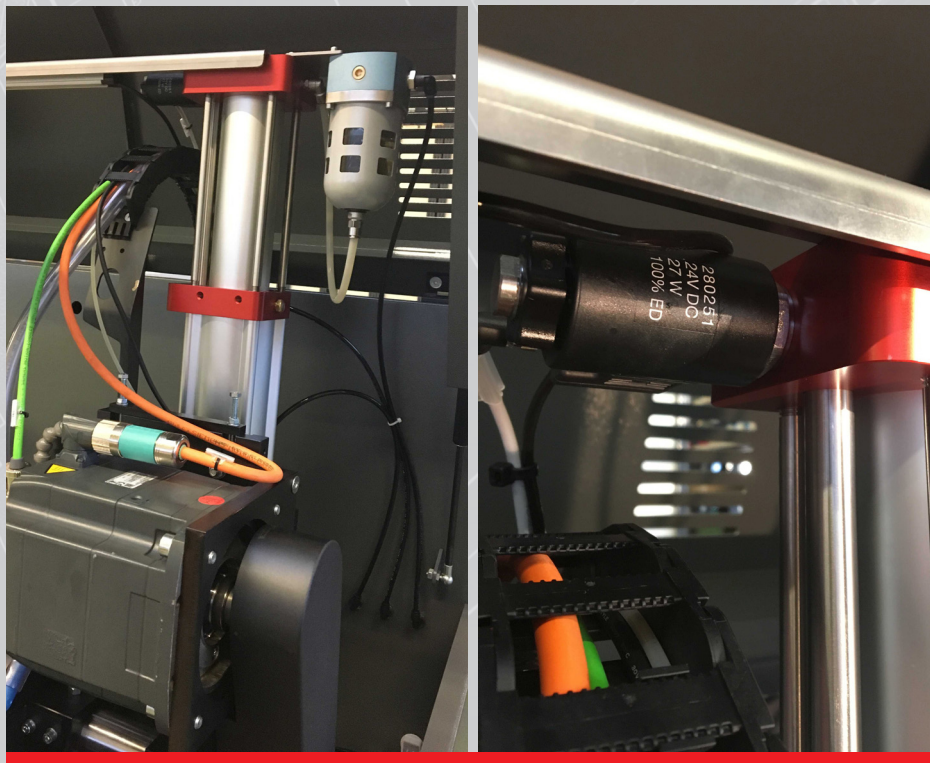
The circular saw blade is driven by a servo-motor that is infinitely adjustable. More power is achieved with a lower cutting speed by using three step gears, and for a higher cutting speed we use a high speed spindle. This allows use of HSS- or Solid Carbide saws.



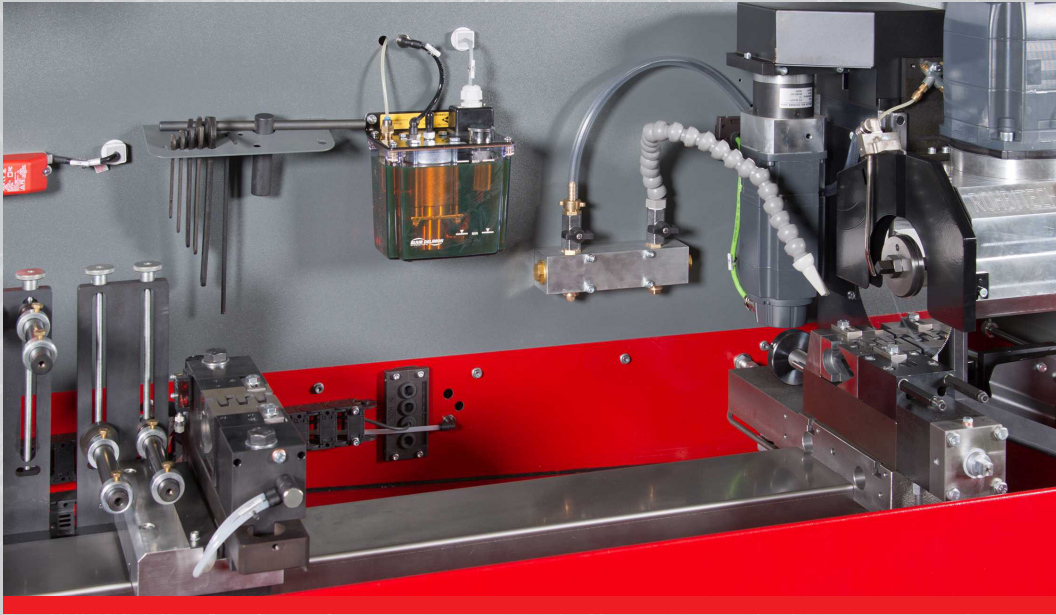
Saw head feed rate can be programmed with up to five different feed rates to maintain optimal cutting conditions throughout the cut.



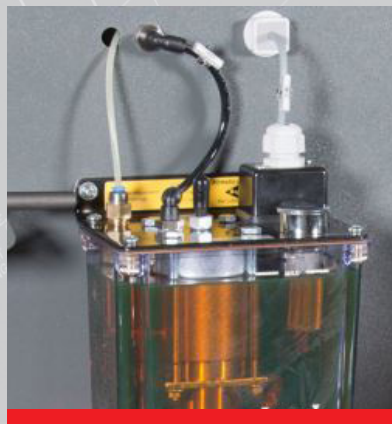
The saw head feed movement is controlled with a pneumohydraulic cylinder and proportional valve. To ensure precision and rigidity the linear guides are pre-tensioned and utilize an integrated displacement measuring system.



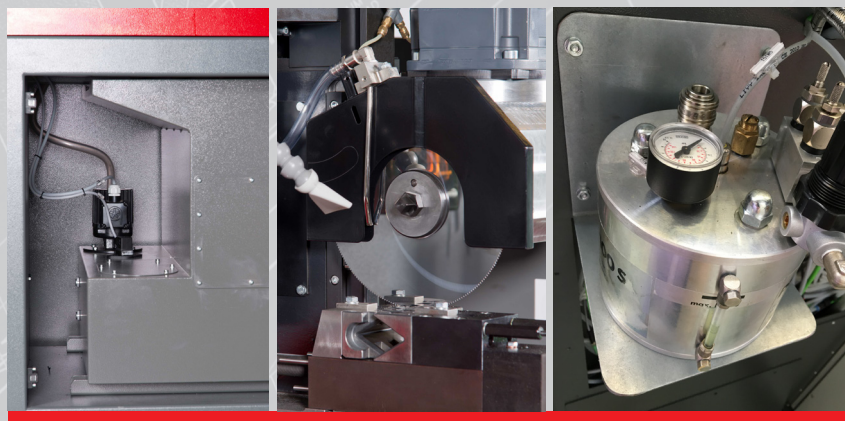
The material feed is by a ball-screw powered by a servo motor. Precision linear guides ensure precise repeatable positioning. The feed length is 600 mm per stroke of the feed unit.



The saw is equipped with an automatic centralized lubrication system.



To cool and lubricate the blade, the saw can be equipped with either a flood coolant system or a mist coolant system.



Technical data

	Solid carbide	High Speed Steel
Round stock	1.0–50 mm	2.0–70 mm
Square stock	60 x 40mm	80 x 40 mm
Circular saw blade diameter	60–200 mm	175–250 mm
Circular saw blade thickness	0.4–1.2 mm	1.0–2.5 mm
Gear rotation speed	40–630 1/min	
Spindle rotation speed	300–4500 1/min	
Dimensions [mm]	2043 x 1270 x 1912	
Weight	850 kg	

We also provide the following attachments:

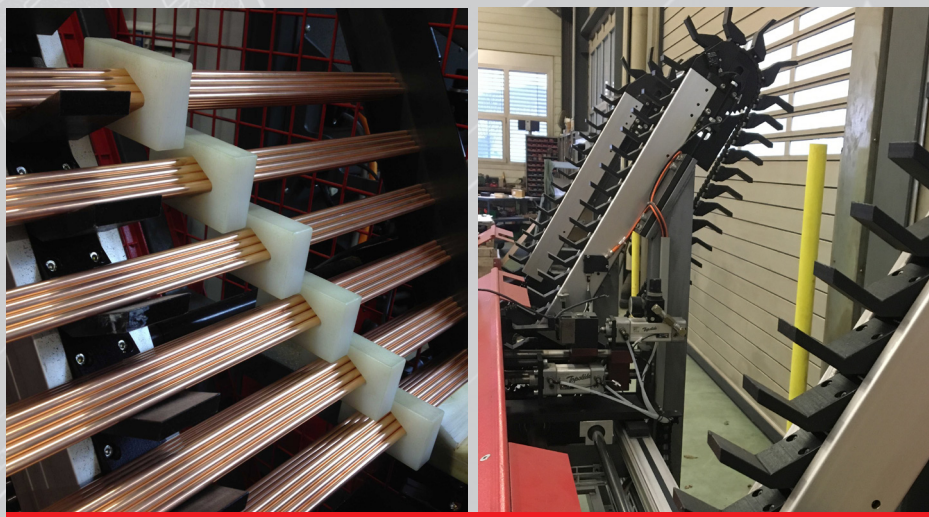
Roller conveyer for
3 or 6 metres



Horizontal loading magazine



Vertical loading magazine



Removal and handling unit



Blow out station



Swarf extraction





ROHBITECH AG

Niederstettenstrasse 15
CH-9536 Schwarzenbach
Switzerland

Phone: +41 62 797 45 91

Fax: +41 62 797 46 54

info@rohbytech.com

www.rohbytech.com